

## ➤ Venturi Cone

## Model : WZ 800 Series

### ○ DESCRIPTION

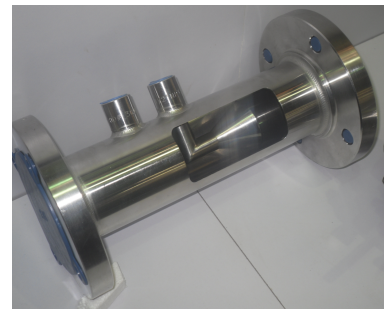
Venturi Cone is an innovative flowmeter which offers the ability measure a differential pressure and a flow rate. Venturi cone offers a better accuracy, variety of ranges, installation flexible and requires less maintenance. The key benefit of venturi cone is that unique design, offers the ability to provide a repeatable accuracy up to 0.5% of rate under the most harsh flow conditions.

Furthermore, it offers a wide range of Reynolds numbers. Venturi cone offers an exceptional sizing flexibility, it's such as offers the diameter from 1/2" to 80". Venturi cone assures a casting performance, and it has no moving parts to be replaced. Additionally, the counted shape of the cone directs the flow without impacting the abrupt surface.



### ○ DESCRIPTION

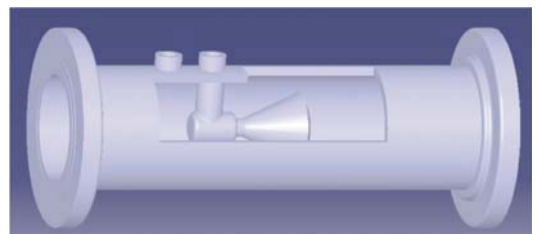
- An accuracy of  $\pm 0.5\%$  in the majority of applications.
- A repeatability of  $\pm 0.1\%$ .
- A typical range of 20 : 1.
- Minimum Reynolds number of 8000.
- Used for static mixing by vortex mixing downstream of the cone.
- Used for measuring fluid of water, steam, gas, etc., as well as many other fluids.
- Differential is generally lower than other differential producers and lower permanent loss [approximately 29% of the generated differential pressure], a constant coefficient over a wide Reynolds number range.



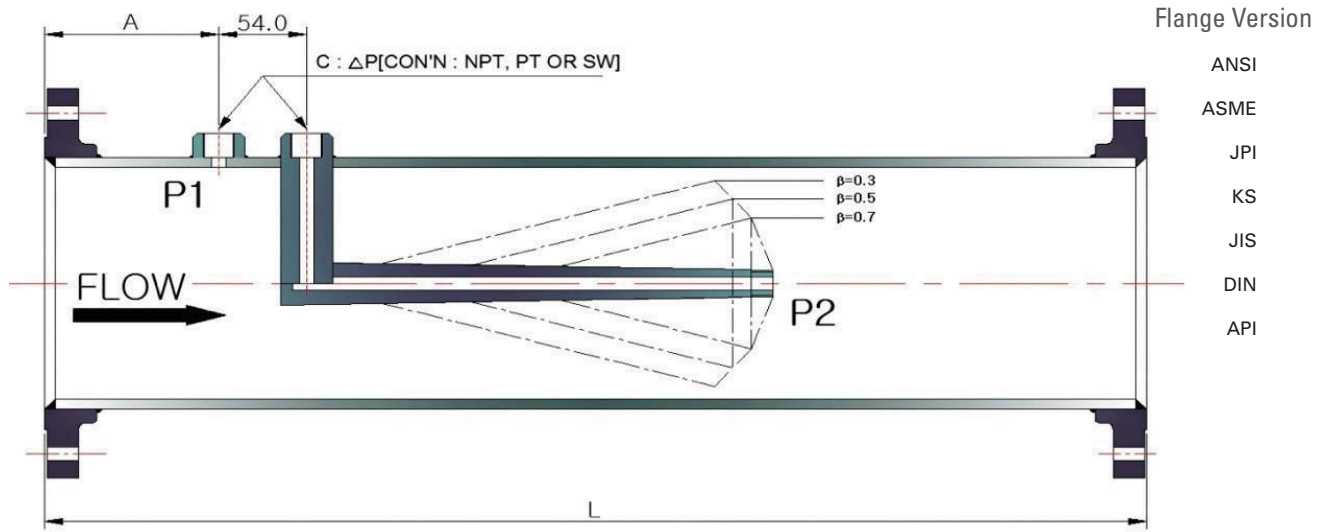
### ○ SPECIFICATION

- Applicable temperature : 350°C [ 660°F].
- Applicable pressure : 1.0 kg/cm<sup>2</sup> [14.2psi] to 60.0 kg/cm<sup>2</sup>[900psi].
- Straight run : Upstream - 3D ~ 5D and Downstream - 5D.
- Material : Pipe - Carbon Steel, Stainless Steel, Alloy Steel etc.

Element - 304LSS, 316LSS and others also are available on request.



Designed



No.	Nominal Pipe Size		A (mm)	L (mm)	C (PT or NPT)
	mm	inch			
1	50A	2B	90	300	3/8" or 1/2"
2	65A	2-1/2B	90	300	3/8" or 1/2"
3	80A	3B	90	360	3/8" or 1/2"
4	100A	4B	100	400	3/8" or 1/2"
5	125A	5B	110	560	3/8" or 1/2"
6	150A	6B	110	560	3/8" or 1/2"
7	200A	8B	130	660	3/8" or 1/2"
8	250A	10B	130	710	3/8" or 1/2"
9	300A	12B	130	760	3/8" or 1/2"
10	350A	14B	150	760	3/8" or 1/2"
11	400A	16B	150	760	3/8" or 1/2"
12	450A	18B	150	920	3/8" or 1/2"
13	500A	20B	150	920	3/8" or 1/2"
14	600A	24B	150	1220	3/8" or 1/2"
15	700A	28B	150	1220	3/8" or 1/2"
16	800A	32B	150	1525	3/8" or 1/2"
17	900A	36B	150	1525	3/8" or 1/2"
18	1000A	40B	150	2030	3/8" or 1/2"
19	1200A	48B	150	2030	3/8" or 1/2"
20	1500A	60B	150	2540	3/8" or 1/2"
21	2000A	80B	150	3050	3/8" or 1/2"